

LOCAL GEOLOGICAL SITES

BRAINTREE DISTRICT



BraG8 Ferriers Farm Pit (Bures Pit)

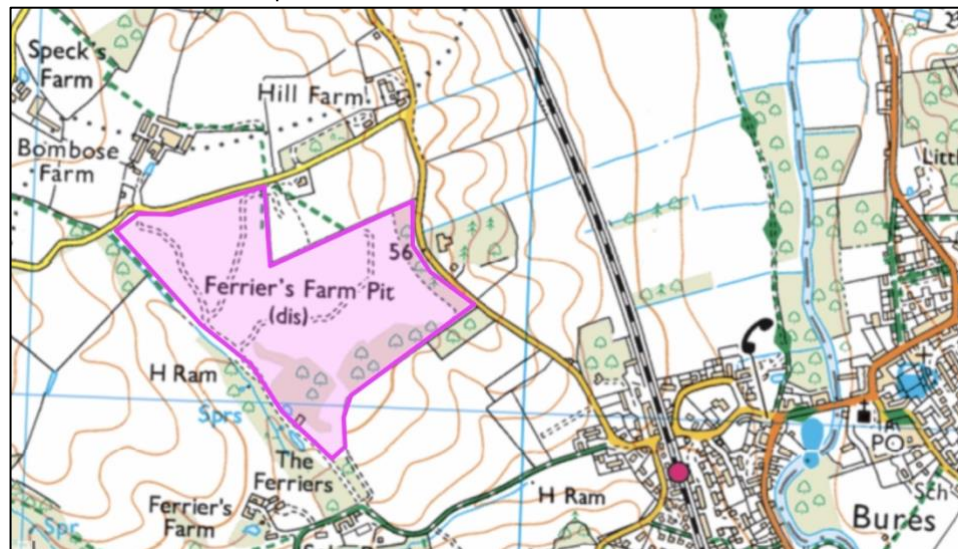
Site location: Former sand and gravel pit at Ferriers Farm, Bures

Grid Reference: TL 896342

Status: Private – the site was used as a centre for off-road motorsport (to 2020)

Summary of the geological interest:

Former gravel pit with exposures of sand gravel laid down by a former course of the Thames. Pit closed and was recently used for off-road motorsport.



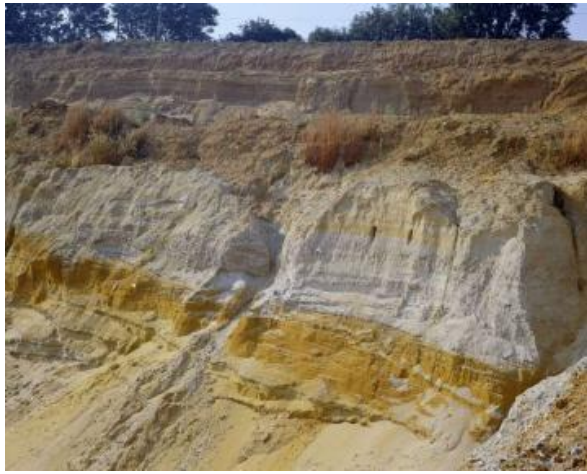
Site Assessment. Local Geological Sites (LoGS) in Essex are assessed using criteria based on DEFRA guidance. An assessment form is used which asks key questions under four value categories: scientific, educational, historical and aesthetic. This site has been assessed and qualifies under these criteria.

Scientific interest and site importance:

Type site of the Bures Gravel (part of the Kesgrave Sands and Gravels). These gravels represent a former course of the River Thames over 500,000 years ago prior to the river being diverted south by the Anglian Ice Sheet.

Formerly exposed here was a section exhibiting Kesgrave Sands and Gravels overlain by Boulder Clay (with sharp planar base) laid down by the ice sheet with glacial gravel at the top of the section. The top part of the Kesgrave gravels is thought to represent a fossilised arctic soil.

Reference: Braintree BGS memoir (Ellison & Lake 1986).



Ferriers Farm Pit in 1975. Photo © British Geological Survey (P212033)



Bures Pit used for motorsport bures-pit.co.uk website 2019



Ferriers Farm Pit - looking North from TL896340 (photo D Potts, 2024)