

LOCAL GEOLOGICAL SITES

MALDON DISTRICT



MaG9 Stansgate Foreshore, Stansgate

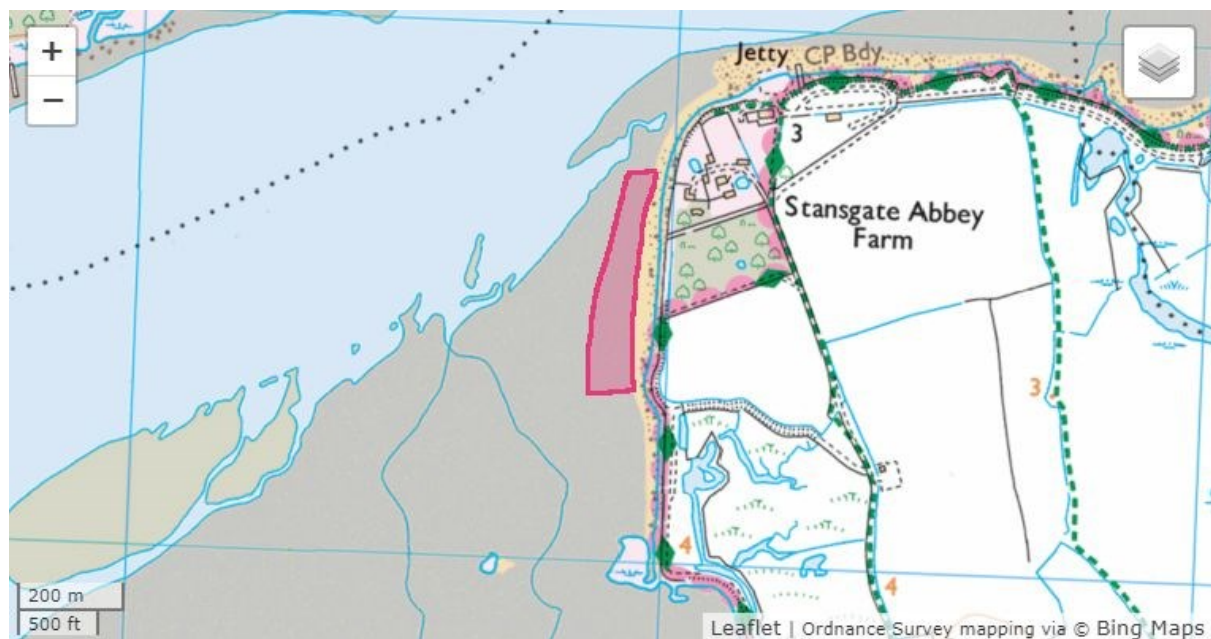
Site location: foreshore adjacent to Stansgate Abbey Farm

Grid Reference: TL 929 054 to 929 057

Status: Limited access at low tide only from footpath to sailing club, adjacent sea wall is private property.

Summary of the geological interest:

The foreshore in front of Stansgate Abbey Farm exposes a platform of London Clay, revealed at low tide, containing fossils of various species of crustacea, crinoids, molluscs and occasional fish and marine vertebrates.



Site Assessment. Local Geological Sites (LoGS) in Essex are assessed using criteria based on DEFRA guidance. An assessment form is used which asks key questions under four value categories: scientific, educational, historical and aesthetic. This site has been assessed and qualifies under these criteria.

Scientific interest and site importance

An exposure of London Clay, a continuation of the exposure at nearby Steeple Bay, revealing the deeper water Division B deposits laid down during the Eocene period, around 53 million years ago. Although prone to silting, gradual erosion of the foreshore has allowed numerous fossils to be recovered, especially lobsters, crabs, shark teeth and crinoid stem fragments.



*The London Clay exposure on the foreshore in front of Stansgate Abbey Farm.
Photo: Jeff Saward, 2014.*